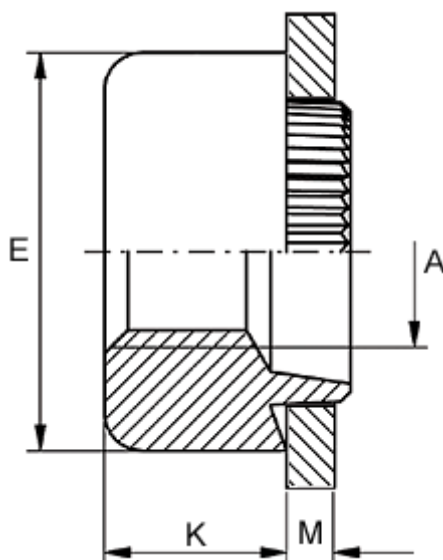


Article number: 12709000060110

Description: KLEE-coil 709 000 060.110
M6 Unhardened, zinc-pl. & chr. blue

Measures



Female thread A	= M6
Height K	= 6.0
Outer diameter E	= 13.0
Plate thickness	= 2.3 to 2.5
Recommended bore diameter for extreme load	= 10.0
Recommended bore diameter for normal use	= 10.0